

BATTERY WITH OFF-GRID SOLAR INVERTER

# ALL IN ONE - BATTERY WITH OFF-GRID SOLAR INVERTER

UI-5.5KW / 5.12kWh



LONG LIFE  
> 3000 cycles



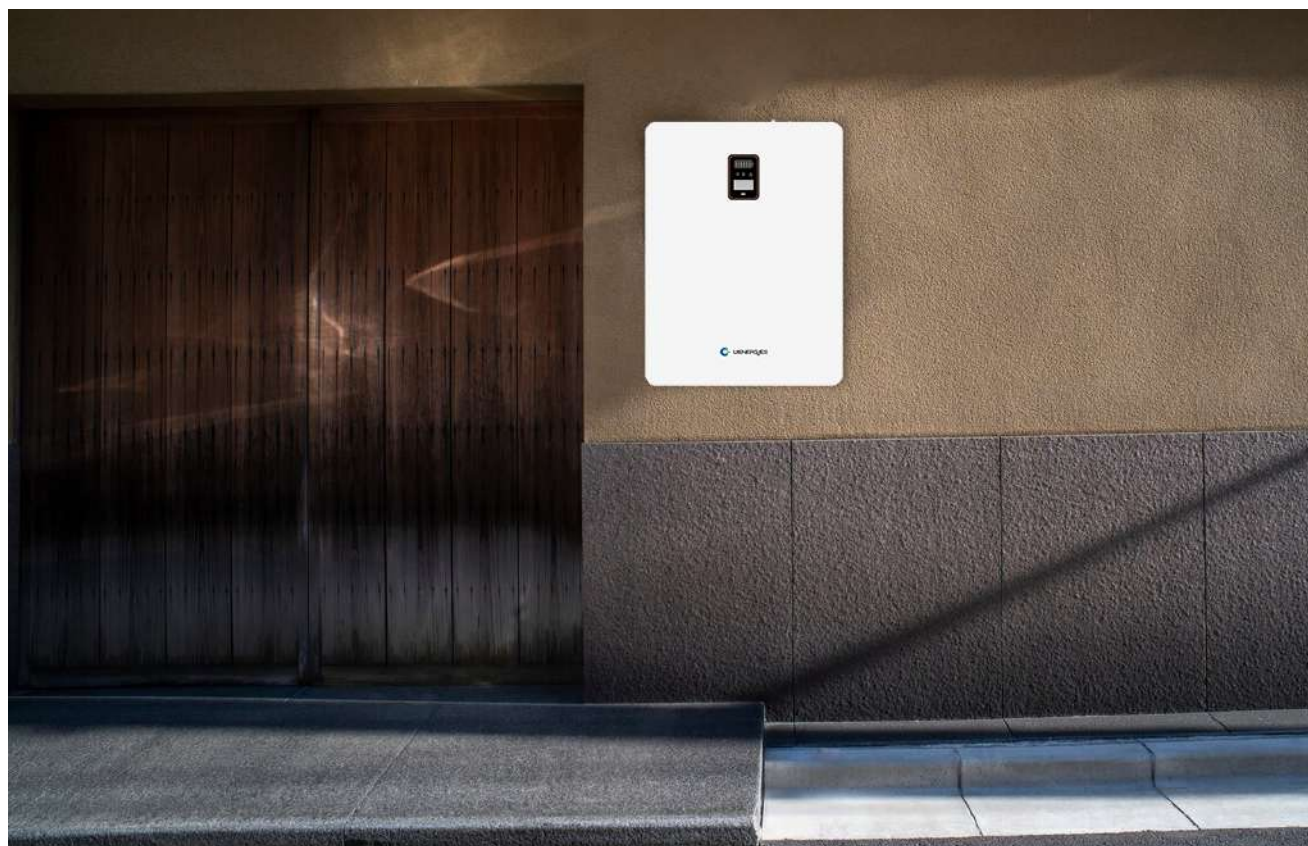
BUILT-IN BMS  
Ultra safe Built-in BMS protection



SAFE & RELIABLE  
Safe lithium iron phosphate cell



EASY TO USE  
Intelligent user interface internal plug and play, barrier-free operation



## TECHNICAL PARAMETERS

Output Power	5500W Max
Phase	Single-phase
Output Voltage	230VAC±10% or 110VAC±10%
Frequency	50HZ/60HZ (Automatic Detection)
Grid Voltage Range	230VAC / 176-270VAC or 110VAC / 90-132VAC
Capacity	5.12kWh (51.2V 100Ah)
Continuous Discharge Current	120A
Maximum Peak Discharge Current	132A/10S
Standard Charging Current	60A
Fast Charging Current	100A
Cooling-down Method	Air-cooled
Warranty	3 Years
Battery Type	LiFePO4
Cycle Life 80% DOD (25±5°C, 0.5C Discharge)	> 3000
Maximum PV Input Power	5500W Max
Maximum PV Input Current	26A Max
MPPT Voltage Range	50-450VDC
The Charge/Discharge Efficiency	>92%
Battery Pack Voltage Range	43.2-60VDC +/-0.6VDC
Interface	Smart LCD Display and APP (Bluetooth or Wifi)
Size	720*540*137mm
Weight	65kg
Installation Method	Wall Mount
Storage Humidity	≤85%RH
Operating Temperature	-10°C~55°C/14°F~ 131 °F
Charging Temperature	0°C~50°C/32°F~ 122 °F
Recommended Operating Temperature	25°C
IP Rating	IP54

